

ROUTLECO

Division Of UCC - www.routleco.com



Traffic Division Product Catalogue

Table Of Contents

Page

Square Signposts	3
U-channel Signposts	6
Round Signposts	8
Flexible And Delineator Signposts	10
NEX Signposts	11
Miscellaneous Sign Brackets	12
Banding Systems	13
Hardware And Assemblies	14
Miscellaneous Products	16
About Us	17



Performance Post: For durability, dependability and unsurpassed quality, they're the way to go.

Successfully meeting today's traffic sign support requirements can be a challenging task, faced with so many different application demands, stringent regulatory requirements, and so many product choices. But, if you take a closer look, you'll see there's now a signpost system that stands out from the rest to deliver exceptional quality and performance, and the flexibility to meet all your small sign support requirements. Our Performance Post system begins as galvanized structural-quality carbon steel that is perforated, formed square, and corner welded in our state-of-the-art roll forming line.

Corrosion resistance is enhanced with the application of a clear acrylic polymer coating. Our manufacturing process ensures exceptional dimensional quality that allows posts of different sizes to telescope into the next larger size. Since it's perforated on all four sides, available in a wide range of size and gauge configurations, and compatible with our Post Slipbase System, Performance Posts will meet all of your small sign support requirements.



Installation Options

Direct Installation

Performance Posts can be driven directly into the ground utilizing power equipment or working manually with a drive cap and a sledgehammer.



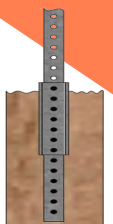
Breakaway Anchor Installation

A Performance Post anchor can be driven into the ground first, allowing crews to work at ground level for quicker, cost effective installations or replacement of damaged signposts.



Super Strength Installation

Two-piece breakaway anchor-sleeve combination is an ideal solution for applications requiring frequent signpost replacement in high impact locations.



Slipbase Installation

When sign size or highway location dictate installation of a Slipbase sign support system, the Post Slipbase System is the logical choice. This system, designed for mounting either solid or perforated square signposts, is a maintenance-friendly and cost effective sign support solution.



The Square Signpost System features durable, perforated, welded steel tubing available in different sizes and gauges. Perforations on all four sides allow for versatile sign mounting, enabling signs to be placed on all sides, back-to-back, or on adjacent sides.

Our unique manufacturing process ensures that different sizes of Square posts telescope seamlessly into one another.

Key Features

- **Simple Installation:** Easily installed by hand or with power tools.
- **Pre-Mounting Convenience:** Signs can be mounted before post installation.
- **Versatile Design:** Four-sided mounting enables signs to be positioned at any height.
- **Quick Repairs:** Damaged signposts are easy and economical to replace.
- **Reusable Materials:** Posts and accessories are designed for reuse, reducing waste.



The square signposts are available in different length such as 6ft, 8ft, 10ft, 12ft and 24ft.

Nominal Outside Dimensions	Part number	Description
1 3/4" x 1 3/4"	16D12X(L)PGC	1.75" - 14GA - Square Post w/hole on four sides– In various lengths
	16F12X(L)PGC	1.75" - 12GA - Square Post w/hole on four sides– In various lengths
2" x 2"	20D12X(L)PGC	2" - 14GA - Square Post w/hole on four sides– In various lengths
	20F12X(L)PGC	2" - 12GA - Square Post w/hole on four sides– In various lengths
2 1/4" x 2 1/4"	22F12X(L)PGC	2.25"- 12GA - Square Post w/hole on four sides– In various lengths
2 1/2" x 2 1/2"	24F12X(L)PGC	2.5"- 12GA - Square Post w/hole on four sides– In various lengths



PA-SPCF175-512: 1 3/4" Square Post Cap– Flat Signs– With 5 1/2" Blade
 PA-SPCX175-512: 1 3/4" Square Post Cap– Extruded Signs– With 5 1/2" Blade
 PA-SPCF200-512: 2" Square Post Cap– Flat Signs– With 5 1/2" Blade
 PA-SPCX200-512: 2" Square Post Cap– Extruded Signs– With 5 1/2" Blade

PA-SPCF175-12: 1 3/4" Square Post Cap– Flat Signs– With 12" Blade
 PA-SPCX175-12: 1 3/4" Square Post Cap– Extruded Signs– With 12" Blade
 PA-SPCF200-12: 2" Square Post Cap– Flat Signs– With 12" Blade.
 PA-SPCX200-12: 2" Square Post Cap– Extruded Signs– With 12" Blade



UCC Industries offers all the accessories required for installing Square Signpost, and connecting the signs.



CB2 : Concrete Base



VA808-8": Steel Base



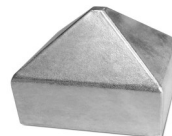
22F12XAPGC: 2 1/4," 12GA 18" Long, Sleeve



20F12XA3PGC: 2" , 12GA ,36"Long, Anchor



TL070SEG: Corner Bolts Set, Incl. Nut & Washer



PA-SRC200 : 2" Square Rain Cap

UCC Industries specializes in crafting custom-made products tailored to your specific needs. Please contact us for any accessories or parts not listed in this catalogue.

Designed for durability and reliability, U-channel signposts resist bending, weathering, and vehicle impact. The distinctive U-shaped cross-section enhances structural stability, while the hot dip galvanized steel construction ensures long-lasting performance. Tapered ends allow for easy installation, saving both time and costs. The design of U-channel signposts also allows for the bolting of two posts together. This assembly minimizes replacement costs when the signpost and sign remain intact, requiring only the anchor post to be replaced. A typical two-piece assembly includes a 10ft (120") signpost and a 5ft (60") anchor post.

Key features of U-channels are as follows:

- **Construction:** 2 1/2" and 1 1/4" deep U-Channel design in 0.165" thick steel.
- **Weight:** 3.4 Kg/m (2.3 Lbs./ft)
- **Piercing Pattern:** the posts are roll formed and pierced with 11 mm (7/16") diameter holes on 51 mm (2") centers. Typically the posts are pierced through full length, however signposts with customized piercing is available upon request.
- **Tapered Ends:** Tapered ends are a standard on sign posts that enhances their drivability. The need for predrilling holes is eliminated resulting in cost saving.
- **Two-piece Assembly:** the design of the signpost system allows for the bolting of two posts together. This assembly reduces post replacement costs where the signpost and sign remains intact and only anchor post requires replacing.



Channel Length	Part number	Description
4 feet	16UC2X4CRC	4 Ft. U-Channels , Holes Full Length, Galvanized
5 feet	16UC2X5CRC	5 Ft. U-Channels , Holes Full Length, Galvanized
8 feet	16UC2X8CRC	8 Ft. U-Channels , Holes Full Length, Galvanized
10 feet	16UC2X10CRC	10 Ft. U-Channels , Holes Full Length, Galvanized
11 feet	16UC2X11CRC	11 Ft. U-Channels , Holes Full Length, Galvanized
12 feet	16UC2X12CRC	12 Ft. U-Channels , Holes Full Length, Galvanized
7feet	16UC2X7037PGMINI	7 Ft. Mini U-Channels , Holes Full Length, Galvanized
8 feet	16UC2X8037PGMINI	8 Ft. Mini U-Channels , Holes Full Length, Galvanized

Installation Options

Direct Installation into Soft Ground

A simple method for installing U-channel posts is to drive them directly into soft ground. A sledgehammer or post driver is used to drive the U-channel post several inches into the ground.





PA-UCF180-512: 180° U-Channel Cap-Flat Signs- with 5 1/2" blade
PA-UCX180-512: 180° U-Channel Cap-Extruded Signs- with 5 1/2" blade
PA-UCF090-512: 90° U-Channel Cap-Flat Signs - with 5 1/2" blade
PA-UCX090-512: 90° U-Channel Cap-Extruded Signs- with 5 1/2" blade

PA-UCF090-12: 90° U-Channel Cap-Flat Signs - with 12" blade
PA-UCX090-12: 90° U-Channel Cap-Extruded Signs - with 12" blade
PA-UCF180-12: 180° U-Channel Cap-Flat Signs - with 12" blade
PA-UCX180-12: 180° U-Channel Cap-Extruded Signs - with 12" blade



UCC Industries offers all the accessories required for installing U-Channel Signpost, and connecting the signs.



PA-SU070: T Support Bracket-Flat Signs



PA-USPACER: U-channel Spacer



PA-238R :U-Channel Post Adaptor 2 -3/8" OD Round



PA-UCXADJ-5: Adjustable U-channel Cap -Extruded Signs - with 5" blade



CB3 : Concrete Base For U-channels



VA808UF: Steel Base

UCC Industries specializes in crafting custom-made products tailored to your specific needs. Please contact us for any accessories or parts not listed in this catalogue.

Round signposts are used to mount street signs, traffic signs, and other signs. Constructed of strong galvanized steel, round sign posts are the ideal choice for street signs as they allow you to mount multiple signs at any angle. These sign posts are resistant to rust, chips, bends, and abrasions.



These round signposts are easy to install and compatible with a variety of mounting systems. They can be driven directly into the ground using post drivers or set in concrete for added stability in high-traffic or extreme weather areas. The round shape allows for 360-degree adjustability of mounted signs, making it ideal for applications requiring precise positioning.

UCC Industries' round sign system offers an economical and reliable solution designed for long-lasting performance. Manufactured with high-strength cold-formed steel, these posts provide superior yield and tensile strength, making them resistant to damage caused by weather, traffic, or vandalism.

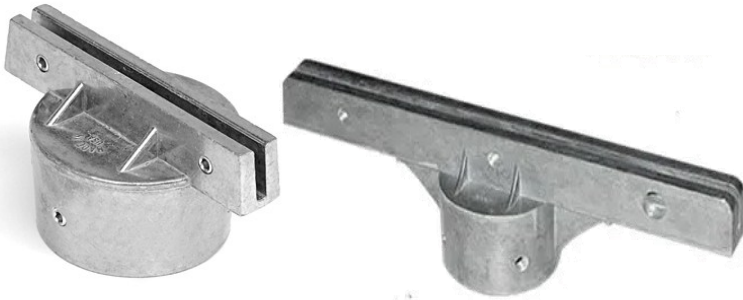
Material: Cold-formed steel for enhanced strength and durability.

Sizes: Available in various diameters and lengths to suit different applications.

Finish: Hot dipped Galvanized for superior corrosion resistance.

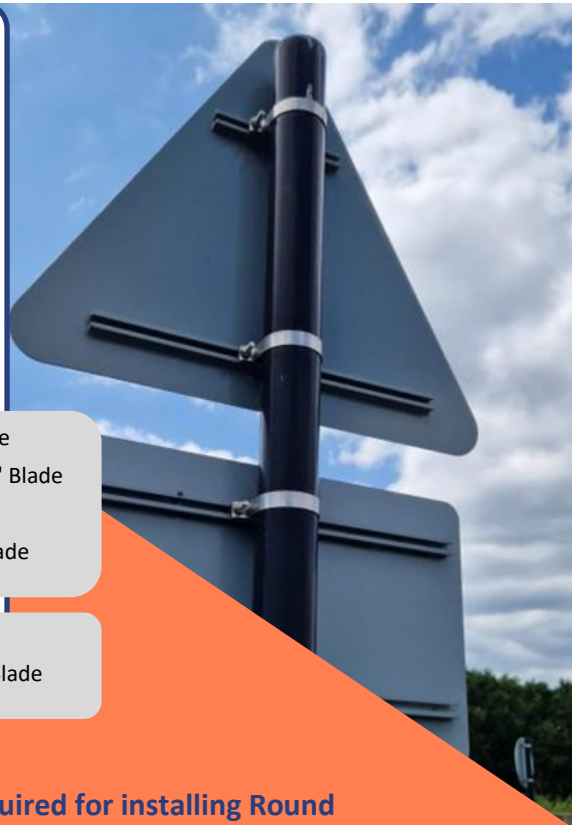
Wall Thickness: Designed for optimal balance between strength and weight (0.125 & 0.154" Thickness)

Outside Dimensions	Part number	Description
3"	300RP9X10PG	2-7/8" Inside Diameter x 10' Long– Round Post - Galvanized– 0.125"Thickness
	300RP9X12PG	2-7/8" Inside Diameter x 12' Long - Round Post - Galvanized- 0.125" Thickness
2 3/8"	238RP9X8PG	2"Inside Diameter x 8' Long - Round Post - Galvanized- 0.154" Thickness
	238RP9X9PG	2"Inside Diameter x 9' Long - Round Post - Galvanized- 0.154" Thickness
	238RP9X10PG	2"Inside Diameter x 10' Long - Round Post - Galvanized- 0.154" Thickness
	238RP9X12PG	2"Inside Diameter x 12' Long - Round Post - Galvanized- 0.154" Thickness



PA-RCF238-512 : 2 3/8" Round Cap -Flat Signs– With 5 1/2" Blade
 PA-RCX238-512 : 2 3/8" Round Cap –Extruded Signs– With 5 1/2" Blade
 PA-RCF300-512 : 3" Round Cap -Flat Signs– With 5 1/2" Blade
 PA-RCX300-512 : 3" Round Cap –Extruded Signs– With 5 1/2" Blade

PA-RCF200-12 : 2 3/8" Round Cap -Flat Signs– With 12" Blade
 PA-RCX200-12 : 2 3/8" Round Cap –Extruded Signs– With 12" Blade



UCC Industries offers all the accessories required for installing Round Signpost, and connecting the signs.



PA-SSCRP238-5: Single Side Clamp
for 2 3/8" OD Round Posts



PA-RPC238: 2 3/8" Round Post Rain
Cap



PA-238R :Post Adaptor 2-3/8" OD
Round



PA-BBSCR238: Back to Back Clamp
for 2 3/8" OD Round Post



VC252-2: 2" U BOLT BRACKET
ASSEMBLY



VC242-2: Bracket Assembly for 2-
3/8" OD Round Post– Aluminum

UCC Industries specializes in crafting custom-made products tailored to your specific needs. Please contact us for any accessories or parts not listed in this catalogue.



These white flexible posts are cost effective, easy to install and free of maintenance.

EK60WP3: 60" white super Post - Round Top.

SF2.4CP: 2 1/4" O.D. Black Cap For Flexible post.

SF0007: 7"x7" Base, incl. Square To Round insert.

Our Square Delineator posts are used to mark areas, divide lanes, and 911 Signage

16UC1X7PG : 1" X 1" X 7 FT. Delineator Posts

16UC1X8PG : 1" X 1" X 8 FT. Delineator Posts



Sign Support System: the Next Generation of Signpost

Revolutionizing the sign support system industry is NEX®, a unique shape sign post, designed to be used with new or existing square anchors or directly embedded .

Tamper Resistant Hardware: quick and easy sign mounting.

Square Tube Anchor: Precision formed square tube guaranteed to telescope with NEX posts or perforated square sign posts. Crash tested for strength and durability.

Finish: Hot dipped galvanized zinc coating conforming to designation G-90.

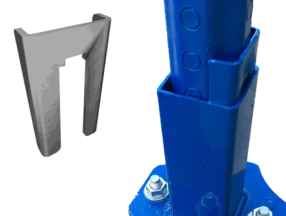
Telescoping Properties: Precision formed NEX post allows all sizes to telescope with existing square tube anchors.



PA-NCF200-514: 2" NEX Cap-Flat Signs- with 5 1/4" blade
PA-NCX200-514: 2" NEX Cap-Extruded Signs- with 5 1/4" blade
PA-NCF175-512: 1 3/4" NEX Cap-Flat Signs- with 5 1/4" blade
PA-NCX175-512: 1 3/4" NEX Cap-Extruded Signs- with 5 1/4" blade

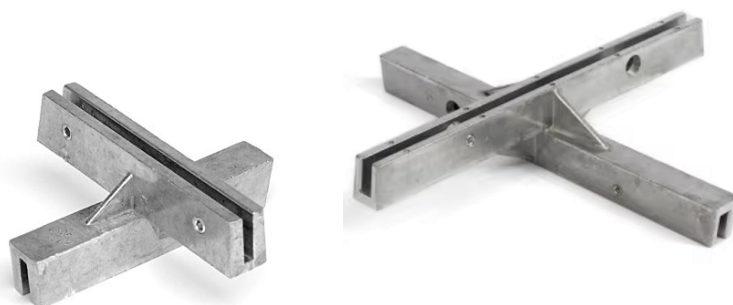


PA-NEXCap200: 2" NEX Top Cap
PA-NEXCap175: 1 3/4" NEX Top Cap



NL200: Wedge FOR 2" NEX Signpost

Part number	Description
NEX214(L)PLG	2" - 14 GA- NEX Signposts - In various lengths (10 or 12 ft)
NEX212(L)PLG	2" - 12 GA- NEX Signposts - In various lengths (10 or 12 ft)



PA-CPF90-512: 90 °Cross Piece -Flat Signs- with 5 1/2" blade

PA-CPX90-512: 90 °Cross Piece -Extruded Signs- with 5 1/2" blade

PA-CPF45-512 :45 °Cross Piece -Flat Signs- with 5 1/2" blade

PA-CPF90-12:90 °Cross Piece -Flat Signs- with 12" blade

PA-CPX90-12 :90 °Cross Piece -Extruded Signs- with 12" blade



PA-WBEX-15: Extension For Wing Bracket 3 1/2" Blade



PA-CPXADJ-512: Adjustable Cross Piece - Extruded Signs - 5 1/2"blade



PA-MAST-ADJ/FIX: Adjustable or Fixed- Mast Arm Bracket



PA-600KBRACKET: K Bracket- For Extruded Signs—6" Blade

PA-634KBRACKET: K Bracket- For Extruded Signs—6 3/4" Blade

PA-900KBRACKET: K Bracket- For Extruded Signs—9" Blade



PA-WB-312: Wing Bracket 14" Blade



PA-EWB160: 16 1/2" External Wing Bracket

TL(A)PG: Custom size Cantilever sign

Please contact us for all available accessories and parts not listed in this catalogue.

Banding and Buckles for Signpost Installation

Banding and buckles provide a secure and reliable method for attaching signs to signposts. The banding, typically made of stainless steel, is wrapped around the sign and post, offering a firm hold that ensures the sign remains in place even under harsh weather conditions. The buckle is then tightened to fasten the band securely, providing a durable and long-lasting installation solution.

This system is ideal for mounting a variety of signs, including traffic, parking, and warning signs. The use of banding and buckles is not only cost-effective but also offers flexibility in installation. The adjustable nature of the banding allows for easy repositioning of the sign, ensuring accurate alignment on the post. Additionally, this fastening method reduces installation time and labor costs, making it an efficient choice for both large and small-scale sign installations. With its resistance to rust and corrosion, banding with buckles provides a durable solution that ensures your signs stay secure and visible over time.

Part #	Banding Description
M20399	3/8" X 0.025 Banding - 100' Roll- In Plastic Tote
M20499	1/2" X 0.030 Banding - 100' Roll- In Plastic Tote
M20599	5/8" X 0.030 Banding - 100' Roll- In Plastic Tote
M20699	3/4" X 0.030 Banding - 100' Roll- In Plastic Tote

Part #	Buckles Description
M25399	3/8" Banding Buckles - 100 Pcs Per Box
M25499	1/2" Banding Buckles - 100 Pcs Per Box
M25599	5/8" Banding Buckles - 100 Pcs Per Box
M25699	3/4" Banding Buckles - 100 Pcs Per Box



UCC Industries offers banding in Plastic Totes and boxes.

- The plastic totes ensure that the banding stays protected and is ready for use without tangling or damage, offering convenience during the installation process.
- The bandings in boxes provides a convenient and cost-effective option for signpost installations.



M02189: Flared Leg Bracket
M31099: Mini Flared Leg Bracket



M00189: Straight Leg Bracket
M31599: Mini Straight Leg Bracket



M00169: Banding Tool (Spinner)



37HHCS(L)EG: 3/8" x (L) Hex Head Bolts - Electro-Galvanized



37FLWREG: 3/8" Flat Washer - Electro-Galvanized



37HHLAG(L)EG :3/8"X (L) Hex Head Lag Bolts - Electro-Galvanized



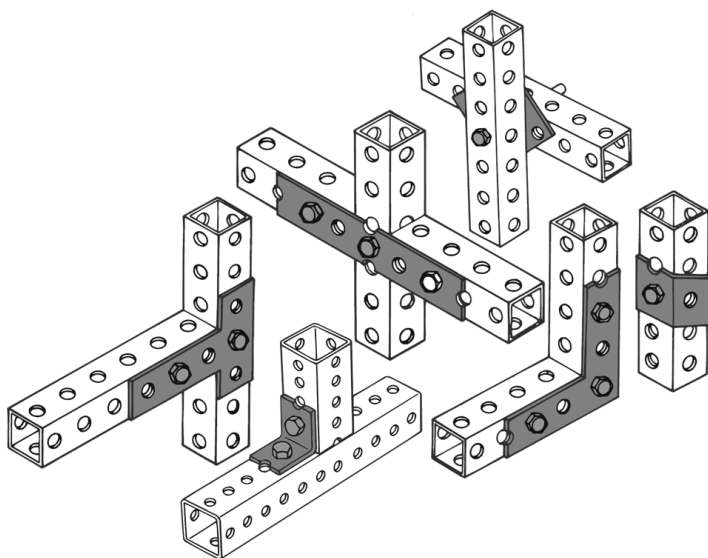
37HHXNEG: 3/8" Hex Nuts - Electro-Galvanized



PA-PYRSPACER: Pyramidal Spacer



TL070SEG: Corner Bolts Set, Incl. Nut & Washer



TL015EG: T Shape Flat plate

TL016EG: L Shape corner Plate

TL019EG: 45° Fitting

TL017EG: Square Plate

TL018EG: Flat plate

TL020EG: 90° Fitting



PA-USPACER: U-channel Spacer



TL3806-AL: 3/8" Drive Rivet-Aluminum
TL3806EEG: 3/8" Drive Rivet-Steel

Please contact us for all available accessories and parts not listed in this catalogue.



Tools

VCT178: Short Arm Hex Key	VCT180: Driver Bit	VCT191: Knurled Nut Tool	VCT198: Stamped Spanner Tool
VCT205: Twelve Point tool	VCT206: Woodsert Driver	VCT238: One Way Removal Tool	VCT200: Ratchet Driver Spanner Tool

Assemblies

VC211: One way Sleeve Bolt	VC147: Carriage Bolt Assembly	VC212: Tamper Proof U-Bolt Assembly	VC222: Temporary Sign Attachment
VC229: Economy Threaded Fastener	VCC15SC: Stand Cast Aluminum Clip	VCC170C: Die Cast Post	VC224: Masonry Anchor

Bolts

VCB144: Truss Unslotted Bolt	VCB148: One Way Truss Head Bolt	VCB166: One Way Truss Head Lag Bolt	VCB171: Rectangular Aluminum Head Bolt
VCB174: Round Head Screw	VCB176: Aluminum Panel Bolt	VCB185: Truss Head Machine Screw	VCB194: Pinned Set Screw
VCB197: One Way Round Head Bolt	VCB205: Twelve Point Bolt	VCB207: Button Head Bolt Pinned	VCB243: Knurled Set Screw
VCB244: Carriage Bolt Aluminum	VCB245: Truss Slot Machine Screw	VCB253: Square Head Bolt	VCB196: Spanners Drive Bolt

Nuts

VCN138: Vandlgard Nut	VCN141: Vandlgard Nut Oversize	VCN150: Vandlgard Nut Zinc Die Cast	VCN152: Woodsert
VCN168-1: Heavy Hex Jam Nut	VCN168-2: Hex Flange Nut	VCN172: Nylon Insert Lock Nut (For Al bolts)	VCN175: Serrated Nut
VCN177: Aluminum Hex Nut	VCN92: Vandlgard Nut	VCN225: Tufnut	VCN246: Rectangular Spring Steel Nut

Rivets

VCR187: Cherry Mate Rivet	VCR193: Breakstem Rivet	VCR231: Steel Drive Rivet	VCR251: Aluminum Jumbo Head Drive Rivet
----------------------------------	--------------------------------	----------------------------------	--

Spacers

VCS169: Sign Saver	VCS189: Nylon Spacer	VCS223: Nylon U-Channel Spacer	VCS237: PVC Spacer
---------------------------	-----------------------------	---------------------------------------	---------------------------



At UCC Industries International, we provide a comprehensive range of high-quality accessories designed to ensure the secure and efficient installation of traffic signposts. From durable sign fasteners and brackets to reliable stainless steel banding and fittings, our products are engineered for maximum performance and long-lasting durability. Whether you're working with square, U-channel, or round post systems, our installation components are built to meet industry standards and deliver exceptional results in all environments.



- Manual Drive caps
- Lock and Release Power Drive Caps
- Lock and release Power Drive Shanks
- Small and Large Corner Bolts
- Corner Brackets
- Custom Base Plates

- Heavy Duty Anchors
- Tubular Winged Heavy Duty Anchors
- Slipbase Anchors
- Winged Slipbase Anchors
- Slipbase Sub-assemblies
- Slipbase Hardware



UCC Industries specializes in crafting custom-made products tailored to your specific needs. Please contact us for any accessories or parts not listed in this catalogue.

UCC Industries International

UCC Industries International is a trusted name across various industries, including manufacturing, construction, distribution, and production. We are dedicated to delivering high-quality products and exceptional services to clients worldwide, with a strong emphasis on innovation, reliability, and customer satisfaction.

Our History

Founded in 1993, UCC Industries International has grown to become a diversified supplier offering a wide range of products, including:

- Unistrut Metal Framing
- Traffic Sign Posts
- Lindapter Connections
- Mechanical and Concrete Supports
- Wolfa Trench Drains
- Cable Clamp Systems

What We Offer

UCC Industries International Inc. has been the largest supplier of traffic signposts and accessories in Eastern Canada for many years. During this time, we have proudly served cities, municipalities, local authorities, and private signage companies. With a commitment to expanding our product range to meet client needs, we now offer:

- Square Post Sign Support Systems
- U-Channel Sign Support Systems
- Galvanized Round Steel Posts
- Sign Fasteners
- Sign Hardware and Accessories
- Delineator Posts (steel and fiberglass)
- Stainless Steel Banding and Fittings
- Custom Fabrication based on customers' needs

UNISTRUT
A PART OF atkore

WOLFA

lindapter

HALFEN

W

JORDAHL

Why Us?

Expertise: Decades of experience and in-depth industry knowledge.

Quality Assurance: A steadfast commitment to delivering premium products.

Global Reach: Serving a wide range of clients across diverse regions.

Customer-Centric Approach: Building long-term relationships through personalized support.



All of our products are of the highest quality and meet MTO/FHWA approval standards.

ROUTLECO

Division Of UCC - www.routleco.com

"Your Partner in Building Excellence"

Contact us:



1101 Autoroute Chomedey (A-13)

Montréal, Quebec Canada, H7W 5J8



(514) 341-3181



+1-905-831-5872



info@routleco.com



www.routleco.com



[linkedin.com/company/ucc-industries](https://www.linkedin.com/company/ucc-industries)